

Quad 10/100 BASE-TX Filtered Connector Module MODEL NO. : RJ14LB-001PC1

FEATURE :

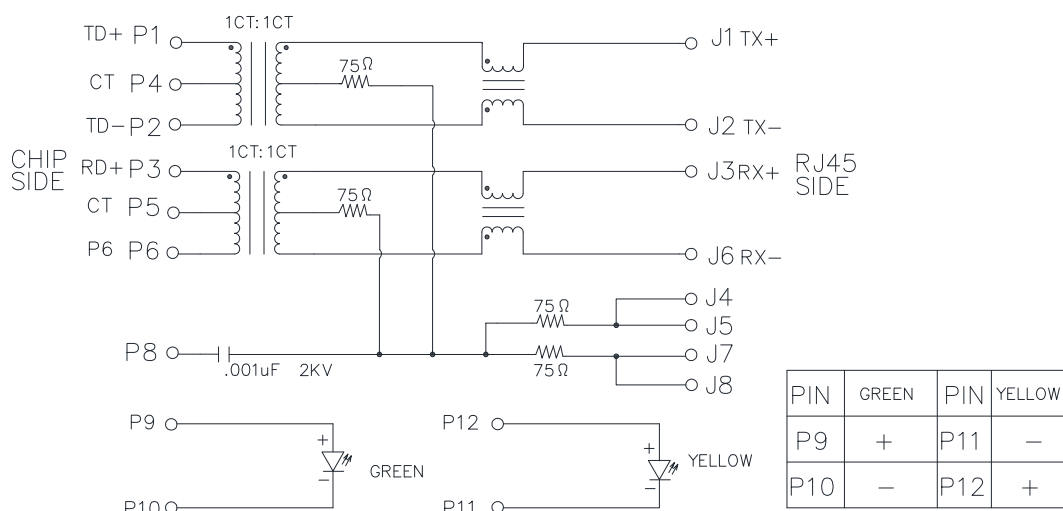
- ⊙ ROHS Compliant
- ⊙ Fully shielded magnetic protect data from internally generated digital noise
- ⊙ Reduces the overall length of the signal path for improved common mode performance
- ⊙ Implements full common mode termination scheme with used and unused twisted pairs
- ⊙ Meets IEEE802.3 Baseline Wander Compensation specification
- ⊙ Integrates high voltage capacitor to chassis ground
- ⊙ Supports all major transceivers with matched turns ration and complete integration of specified termination
- ⊙ Design for 100base-tx transmission OVER UTP-5 cable
- ⊙ Operating TEMP. range:-40°C to +85°C
- ⊙ Storage TEMP. range:-40°C to +85°C
- ⊙ Primary OCL inductance:350uH MIN. at 100KHz/0.1Vrms 8mA DC bias.

SPECIFICATIONS:

Typical Performance Characteristics @25°C

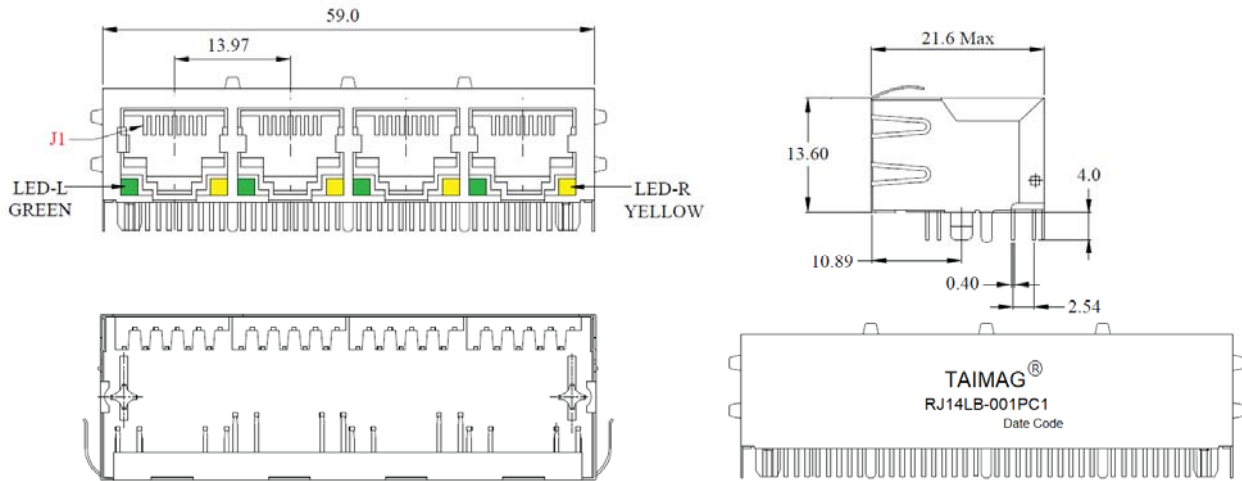
Insertion Loss MHz (dB MAX)	Return Loss MHz (dB Min @100Ω)			Differential to Common Mode Rejection MHz (dB MIN)	Cross talk MHz (dB MIN)	CMRR MHz (dB MIN)	Isolation Voltage (Vrms min)
	1~30	60~80	80~100				
1~100	1~30	60~80	80~100	1~100	1-100	1~100	1200/1mA
-1.0	-18	-12	-10	-33	-30	-30	

SCHEMATIC:

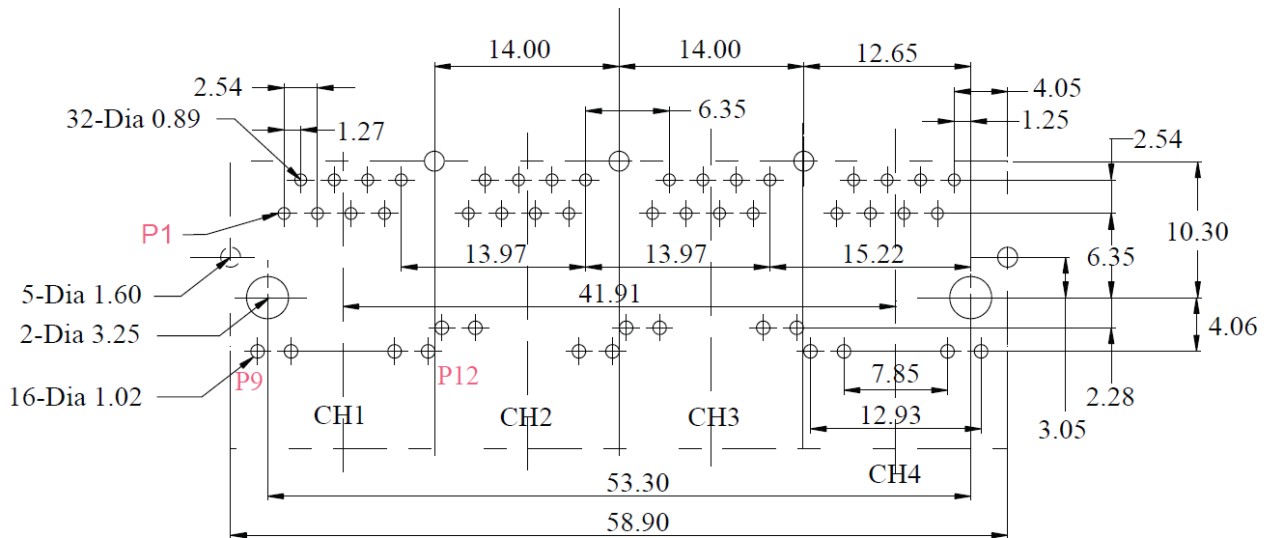


MODEL NO. : RJ14LB-001PC1

DIMENSION & MARKING: mm; all dimensions tolerances is $\pm 0.254 / 0.010$



PCB LAYOUT: mm; all dimensions tolerances is ± 0.05



SUGGESTED PCB LAYOUT (TOP VIEW)

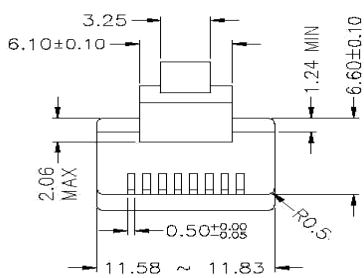
MODEL NO. : RJ14LB-001PC1

MATERIAL REQUIREMENTS:

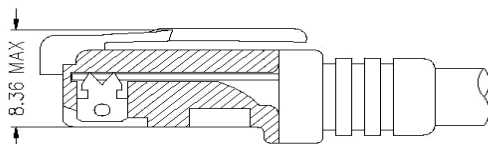
- Connector Material :
 - Housing : Thermoplastic PBT + 30%GF UL94V-0 rated
 - Contact : Phosphor Bronze(C5191), Gold plated on Contact area 6u" min.
 - Input Terminal : Brass(C2680)
 - Metal shielding :Copper alloy with Nickel plated(C2680)
- Pin not electrically connected maybe omitted see electrical drawing for omitted pins
- RJ45 cavities conform to FCC rules and regulation PART 68
- The part is recommended for wave soldering process peak soldering temperature is 260°C max , 10S max
- LED:

LED Specification			
Standard LED	Wavelength	Forward V (max)	TYP
Green	560~580 nm	2.5V	2.1~2.2
Yellow	580~610 nm	2.5	2.1~2.2

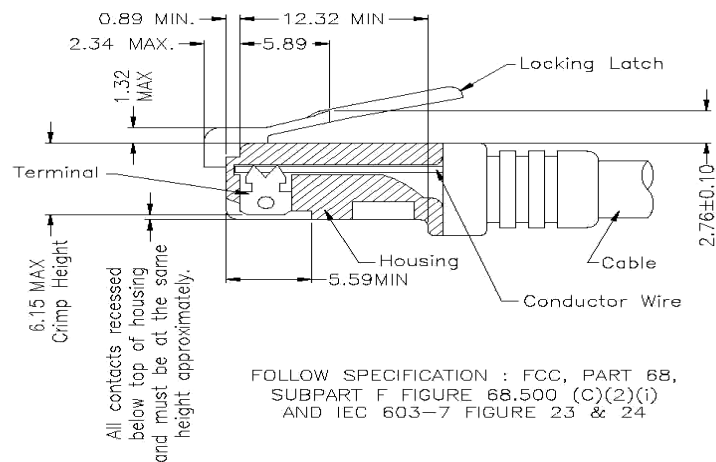
RJ PLUG SPECIFICATION :



- * There must be no damage to housing or locking latch. There must be no nicks or cuts in cable.
- * Durability : 750 cycles generally



FOLLOW SPECIFICATION : FCC, PART 68, SUBPART F FIGURE 68.500 (C)(2)(ii)



FOLLOW SPECIFICATION : FCC, PART 68, SUBPART F FIGURE 68.500 (C)(2)(i) AND IEC 603-7 FIGURE 23 & 24

STANDARD MODULAR PLUG ASSEMBLY

MODEL NO. : RJ14LB-001PC1

PACKING:

1. package : 44 pcs / tray
2. Carton : 264 pcs / 6 layers of tray

ORDER INFORMATION:

